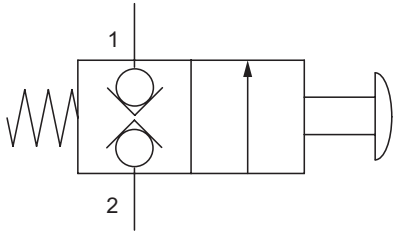


Manually Operated Directional Control Valve

Screw-in cartridge, normally closed poppet, manually operated, spring return



LM06W Series

5000 psi, 4 gpm

We are pleased to introduce the LM06W series of manually operated poppet valves.

Push to open



Features and Benefits

- Push to operate, spring return
- Normally closed poppet valve
- Leaktight even at high pressures
- Robust simple operation
- Ultra compact footprint allows installation in the tightest locations
- Use for emergency pilot apply/release for safe equipment operation

Typical Performance

LM06W Pressure Drop

