

Proportional Directional Flow Control Valve

Screw-in cartridge, solenoid operated, 4-way, 3-position, spool type, direct acting

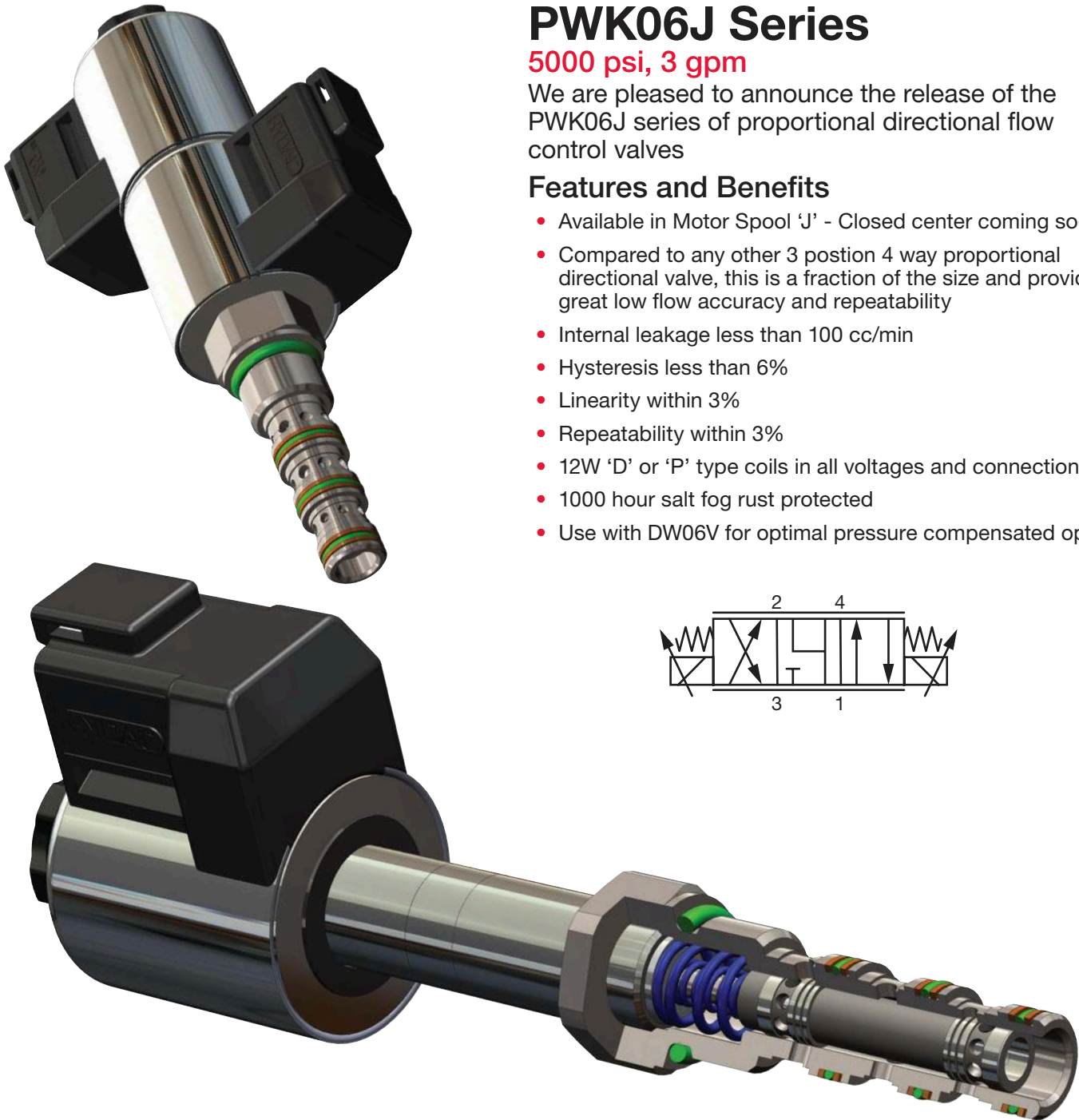
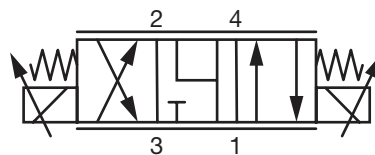
PWK06J Series

5000 psi, 3 gpm

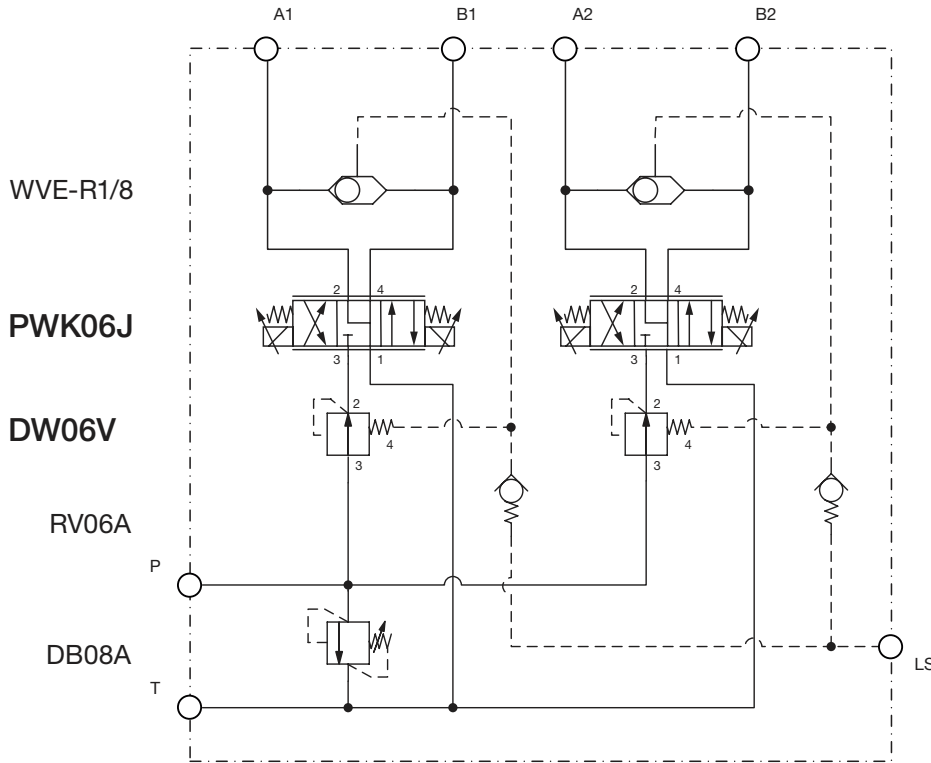
We are pleased to announce the release of the PWK06J series of proportional directional flow control valves

Features and Benefits

- Available in Motor Spool 'J' - Closed center coming soon
- Compared to any other 3 position 4 way proportional directional valve, this is a fraction of the size and provides great low flow accuracy and repeatability
- Internal leakage less than 100 cc/min
- Hysteresis less than 6%
- Linearity within 3%
- Repeatability within 3%
- 12W 'D' or 'P' type coils in all voltages and connections
- 1000 hour salt fog rust protected
- Use with DW06V for optimal pressure compensated operation



Typical Application



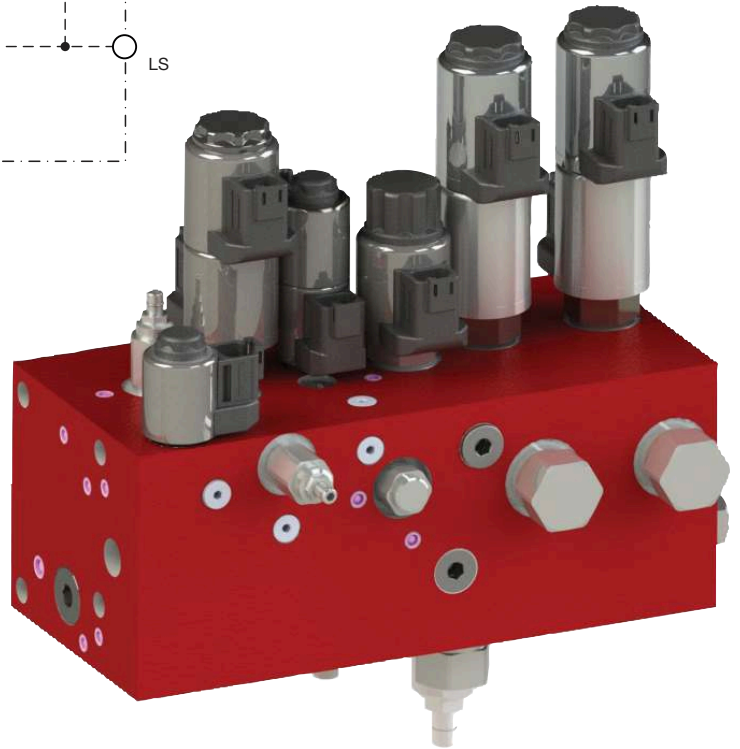
Shown here in a simple 2 function circuit with **DW06V** inlet compensators. Use of a compensator ensures constant flow at any given control setting regardless of variations in pressure.

Using a 200 psi compensator will allow high flow up to 4 gpm, while a 100 psi compensator will allow for excellent control at lower flows.

For less precise applications the valve may be used without a compensator.

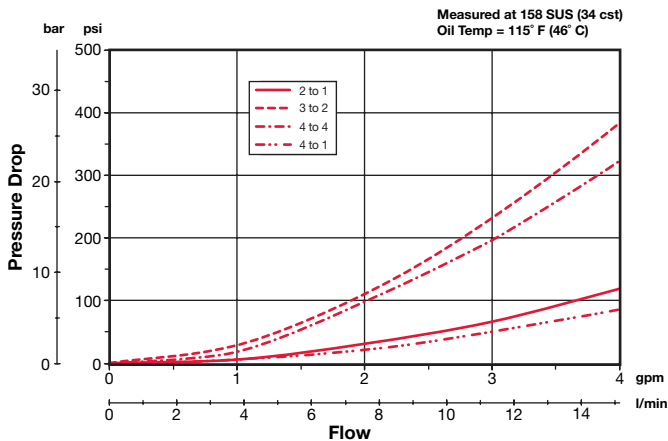
The **PWK06J** series is fully interchangeable with the **WK06E** and **J ON/ OFF** valves allowing great flexibility to machine builders.

The compact high power coils allow multiple valves to be installed in a very small space - for example 6 functions can be housed within an 8" long block.



Typical Performance

Pressure Drop



Flow vs. % Input Command (Compensated)

