



FILTER SYSTEMS

CSI-D-5 Kit

ConditionSensor Interface

Connection overview

English (translation of original instructions)

Document No.: 3437269c



Trademarks

The trademarks of other companies designate the products of those companies exclusively.

Copyright © 2011 by HYDAC FILTER SYSTEMS GMBH all rights reserved

All rights reserved. This manual may not be reproduced in part or whole without the express written consent of HYDAC FILTER SYSTEMS GMBH. Contraventions are liable to compensation.

Exclusion of liability

We have made every endeavor to ensure the accuracy of the contents of this document. However, errors cannot be ruled out. Consequently, we accept no liability for such errors as may exist nor for any damage or loss whatsoever which may arise as a result of such errors. The content of the manual is checked regularly. Any corrections required will be incorporated in future editions. We welcome an suggestions for improvements.

All details are subject to technical modifications.

All content of this manual is subject to revision without notice.

HYDAC FILTER SYSTEMS GMBH
Postfach 12 51
66273 Sulzbach / Saar
Germany

Documentation Representative

Mr. Günter Harge

c/o HYDAC International GMBH, Industriegebiet, 66280 Sulzbach / Saar

Telephone: ++49 (0)6897 509 1511

Fax: ++49 (0)6897 509 1394

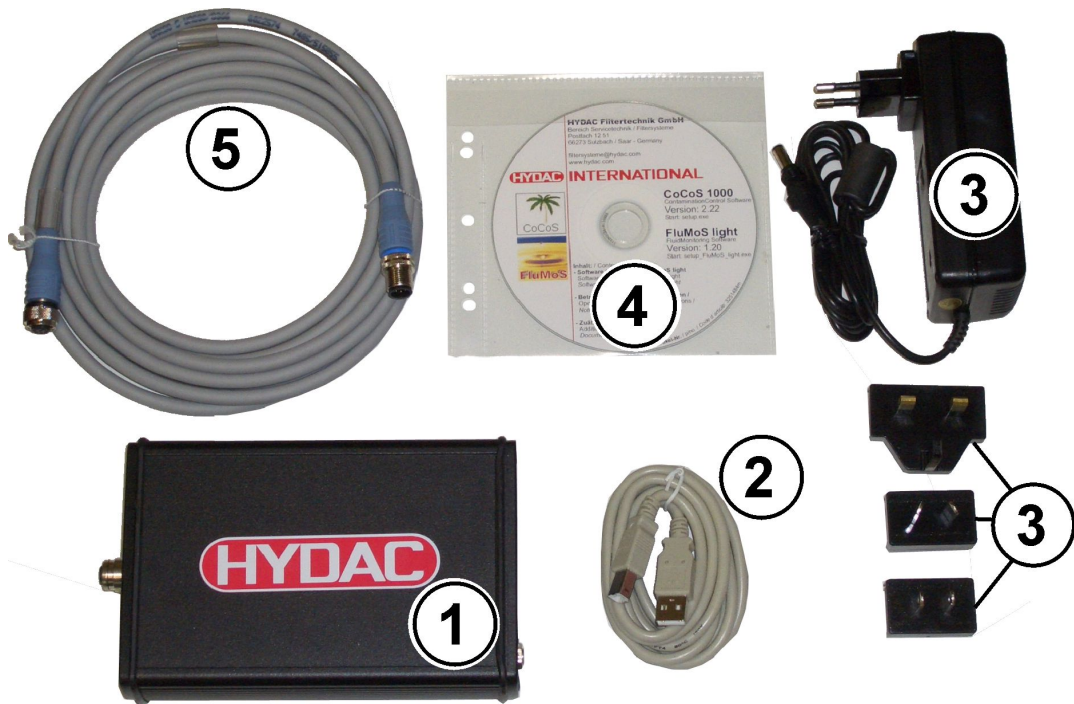
E-mail: guenter.harge@hydac.com

CSI-D-5 Kit Features

The ConditionSensor Interface CSI-D-5 is a package. You can use the CSI-D-5 to connect a fluid sensor (e.g. CS 1000 and MCS 1000) to your PC to:

- Operate (set parameters and limit values) or
- Read out measured values online and save them in a .sav file.
.sav files cannot be opened directly with MS Excel.

Checking scope of delivery of the CSI-D-5 kit

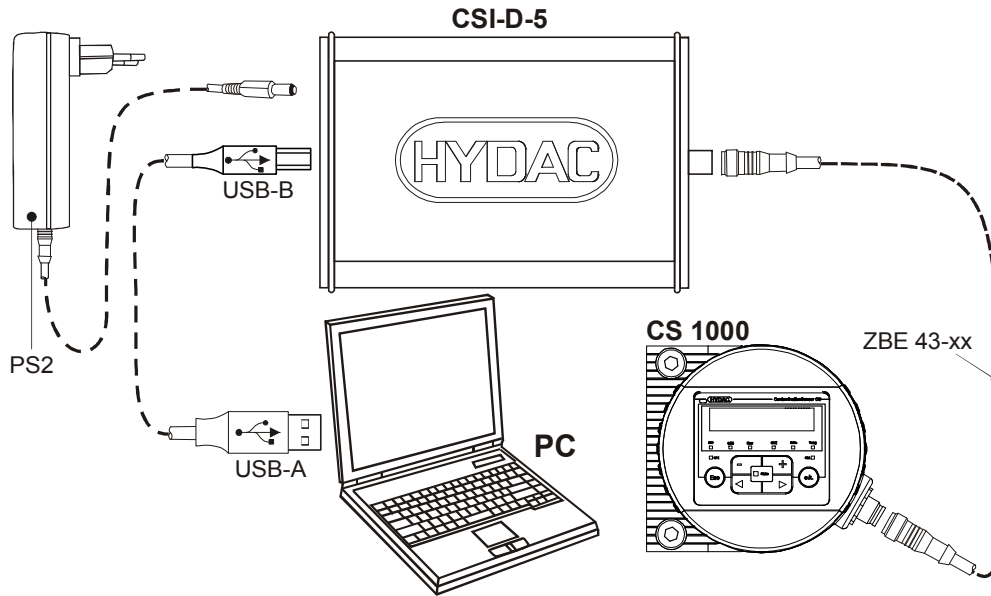


Item	Qty	Part no.	Designation
1	1	3279492	ConditionSensor Interface
2	1	6064126	USB cable, length=1.8 m
3	1	6076711	Power adapter (with additional 3 different PS2 plugs)
4	1	3355176	CD-ROM - PC-Software Pack FluMoS light
5	1	3281240	Connection cable, socket (female) 8-pole <-> plug (male), 8-pole length = 5m ZBE 43-05
-	1	3437269	Connection overview (this document)

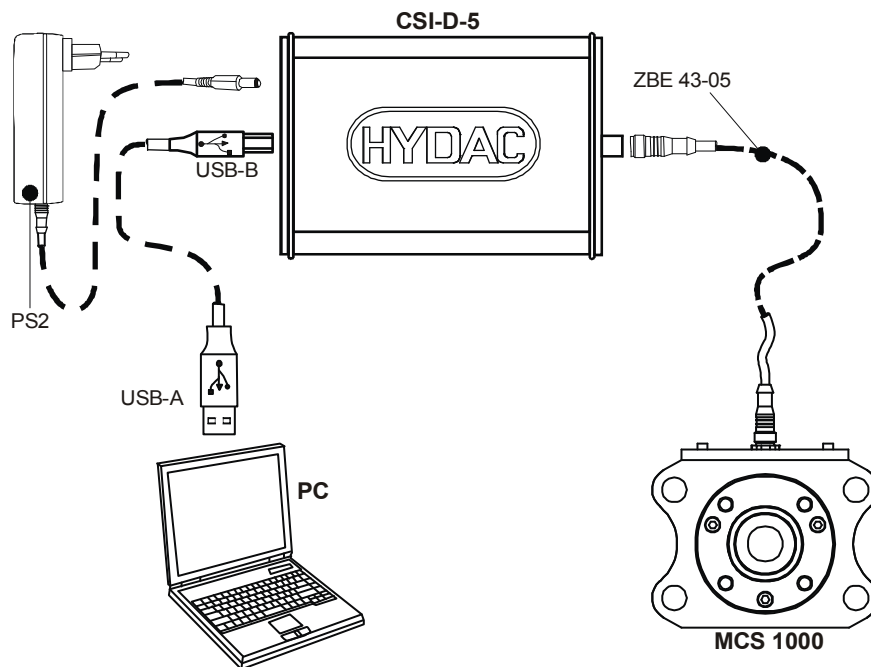
CSI-D-5 Connection Overview

Connect the CSI-D-5 according to the following connection diagram:

CSI-D-5 <-> CS1000



CSI-D-5 <-> MCS1000



Installing USB Driver Software

Connect the CSI-D-5 before you install the software.

To install the software driver, proceed as follows:

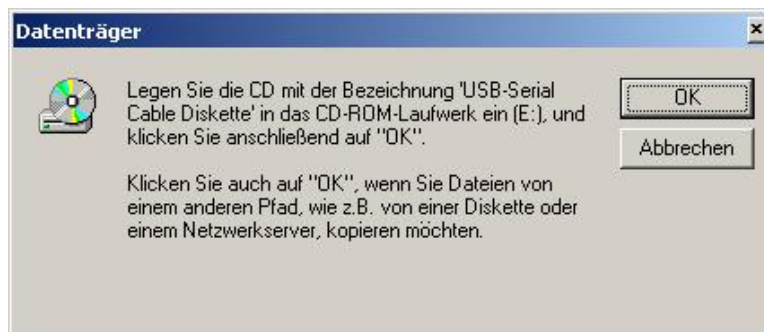
Connect the CSI-D-5 to the CS 1000 according to the diagram.

Connect the adaptor box to the PC via the USB cable. The PC recognizes the hardware/device automatically.



If no suitable driver has yet been installed, insert the CD-ROM with FluMoS with the corresponding driver into the CD drive.

The USB port will note the installation of FluMoS. Always use the same USB port for connecting the CSI-D-5.



Insert the CD-ROM with FluMoS. Then click on .

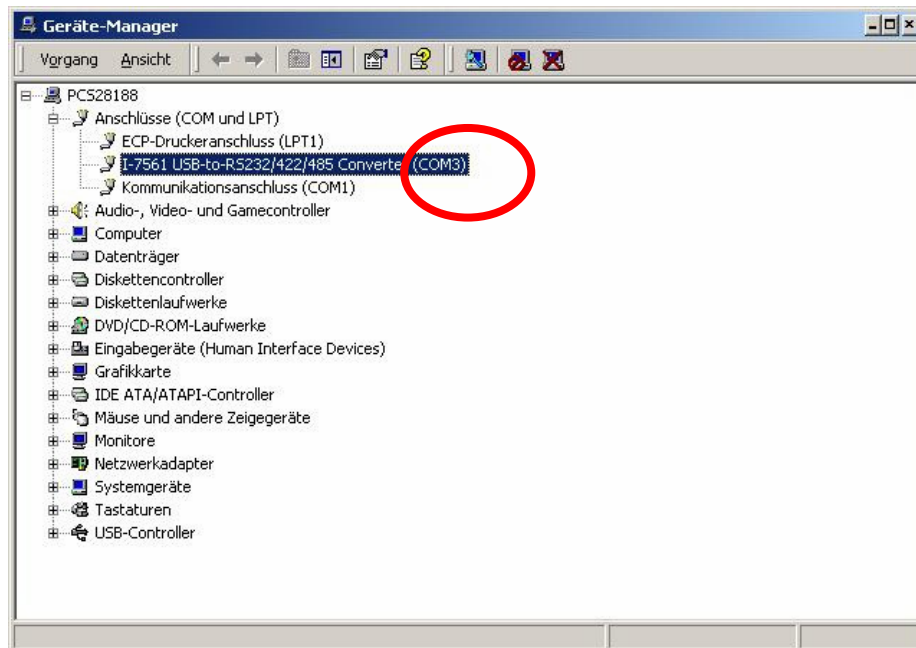
Select the letter of your CD-ROM drive.

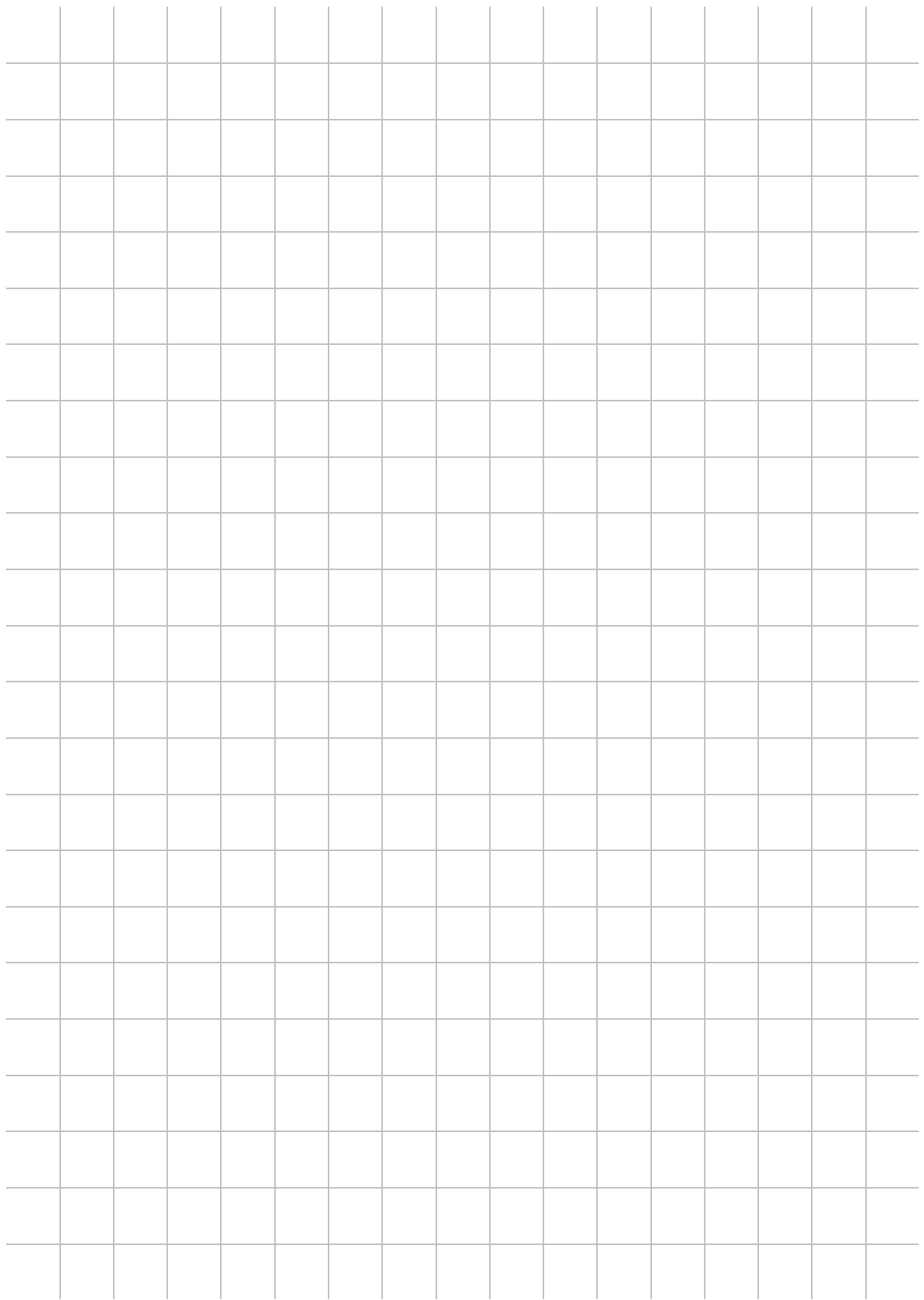


Click on .

The driver ser2pl.sys will now be installed.

If installation is successful, you will find the driver with the corresponding COM port no. in your device manager of the system control. Identify the COM-Port for the FluMoS software.







FILTER SYSTEMS

HYDAC FILTER SYSTEMS GMBH

Industriegebiet

66280 Sulzbach/Saar

Germany

Postfach 1251

66273 Sulzbach/Saar

Germany

Phone: +49 (0) 6897 509 01

Fax: +49 (0) 6897 509 846

Fax: +49 (0) 6897 509 577

Central

(Technical Department)

(Sales Department)

Internet: www.hydac.com

E-Mail: filtersystems@hydac.com